

AP Calculus  
7.1 Worksheet

All work must be shown in this course for full credit. Unsupported answers may receive NO credit.

1. Fill in the blanks.

- a) Integrating velocity gives \_\_\_\_\_
- b) Integrating the absolute value of velocity gives \_\_\_\_\_.
- c) New position = \_\_\_\_\_ + \_\_\_\_\_.

[CALCULATOR]

2. A particle moves along the  $x$  – axis so that its velocity at time  $t$  is given by

$$v(t) = -(t+1)\sin\left(\frac{t^2}{2}\right).$$

At time  $t = 0$ , the particle is at position  $x = 1$ .

- a) Find the acceleration of the particle at time  $t = 2$ . Is the speed of the particle increasing at  $t = 2$ ? Why or why not?
- b) Find all times  $t$  in the open interval  $0 < t < 3$  when the particle changes direction. Justify your answer.
- c) Find the total distance traveled by the particle from time  $t = 0$  until time  $t = 3$ .
- d) During the time interval  $0 \leq t \leq 3$ , what is the greatest distance between the particle and the origin? Show the work that leads to your answer.

[CALCULATOR]

3. The rate at which people enter an amusement park on a given day is modeled by the function  $E$  defined by

$$E(t) = \frac{15600}{t^2 - 24t + 160}.$$

The rate at which people leave the same amusement park on the same day is modeled by function  $L$  defined by

$$L(t) = \frac{9890}{t^2 - 38t + 370}.$$

Both  $E(t)$  and  $L(t)$  are measured in people per hour and time  $t$  is measured in hours after midnight.

These functions are valid for  $9 \leq t \leq 23$ , the hours during which the park is open. At time  $t = 9$ , there are no people in the park.

a) How many people have entered the park by 5:00 pm ( $t = 17$ )? Round your answer to the nearest whole number.

b) The price of admission to the park is \$15 until 5:00 pm ( $t = 17$ ). After 5:00 pm, the price of admission to the park is \$11. How many dollars are collected from admissions to the park on the given day? Round your answer to the nearest whole number.

c) Let  $H(t) = \int_9^t (E(x) - L(x)) dx$  for  $9 \leq t \leq 23$ . The value of  $H(17)$  to the nearest whole number is 3725.

Find the value of  $H'(17)$  and explain the meaning of  $H(17)$  and  $H'(17)$  in the context of the park.

d) At what time  $t$ , for  $9 \leq t \leq 23$ , does the model predict that the number of people in the park is a maximum?

4. Complete the following questions from the textbook: page 386 #9, 12 – 16, 17, 19, 21, 31 - 36

AP Calculus  
7.2 Worksheet

All work must be shown in this course for full credit. Unsupported answers may receive NO credit.

1. Find the area of the region bounded by the graphs of  $f(x) = 2 - x^2$  and  $g(x) = x$ .

2. Find the area of the region bounded by the graphs of  $g(x) = \frac{4}{2-x}$ ,  $y = 4$ , and  $x = 0$ .

3. The area of the region bounded by the graphs of  $y = x^3$  and  $y = x$  cannot be found by the single integral

$$\int_{-1}^1 (x^3 - x) dx.$$

Explain why this is so. Use symmetry to write a single integral that does represent the area.  
(Use your calculator to generate a picture)

4. [Calculator] Find the area of the region between the graphs of  $f(x) = 3x^3 - x^2 - 10x$  and  $g(x) = -x^2 + 2x$ .

5. Complete the following questions from your textbook: p395 #1, 2, 4, 9, 13, 37, 41, 54

AP Review #1  
[Calculator]

There is no snow on Janet's driveway when snow begins to fall at midnight. From midnight to 9 A.M., snow accumulates on the driveway at a rate modeled by  $f(t) = 7te^{\cos t}$  cubic feet per hour, where  $t$  is measured in hours since midnight. Janet starts removing snow at 6 A.M. ( $t = 6$ ). The rate  $g(t)$ , in cubic feet per hour, at which Janet removes snow from the driveway at time  $t$  hours after midnight is modeled by

$$g(t) = \begin{cases} 0 & \text{for } 0 \leq t < 6 \\ 125 & \text{for } 6 \leq t < 7 \\ 108 & \text{for } 7 \leq t \leq 9 \end{cases}$$

- (a) How many cubic feet of snow have accumulated on the driveway by 6 A.M.?
- (b) Find the rate of change of the volume of snow on the driveway at 8 A.M.
- (c) Let  $h(t)$  represent the total amount of snow, in cubic feet, that Janet has removed from the driveway at time  $t$  hours after midnight. Express  $h$  as a piecewise-defined function with domain  $0 \leq t \leq 9$ .
- (d) How many cubic feet of snow are on the driveway at 9 A.M.?

AP Review #2  
[Calculator]

$t$ (hours)	0	2	5	7	8
$E(t)$ (hundreds of entries)	0	4	13	21	23

A zoo sponsored a one-day contest to name a new baby elephant. Zoo visitors deposited entries in a special box between noon ( $t = 0$ ) and 8 P.M. ( $t = 8$ ). The number of entries in the box  $t$  hours after noon is modeled by a differentiable function  $E$  for  $0 \leq t \leq 8$ . Values of  $E(t)$ , in hundreds of entries, at various times  $t$  are shown in the table above.

(a) Use the data in the table to approximate the rate, in hundreds of entries per hour, at which entries were being deposited at time  $t = 6$ . Show the computations that lead to your answer.

(b) Use a trapezoidal sum with the four subintervals given by the table to approximate the value of  $\frac{1}{8} \int_0^8 E(t) dt$ . Using correct units, explain the meaning of  $\frac{1}{8} \int_0^8 E(t) dt$  in terms of the number of entries.

(c) At 8 P.M., volunteers began to process the entries. They processed the entries at a rate modeled by the function  $P$ , where  $P(t) = t^3 - 30t^2 + 298t - 976$  hundreds of entries per hour for  $8 \leq t \leq 12$ . According to the model, how many entries had not yet been processed by midnight ( $t = 12$ )?

(d) According to the model from part (c), at what time were the entries being processed most quickly? Justify your answer.

AP Calculus  
7.3 Worksheet (Day 1)

All work must be shown in this course for full credit. Unsupported answers may receive NO credit.

1. The base of a solid is the region enclosed by the graph of  $y = e^{-x}$ , the coordinate axes, and the line  $x = 3$ . If all plane cross sections perpendicular to the  $x$  – axis are squares, then its volume is

A)  $\frac{1 - e^{-6}}{2}$

B)  $\frac{1}{2}e^{-6}$

C)  $e^{-6}$

D)  $e^{-3}$

E)  $1 - e^{-3}$

2. [Calculator] The base of a solid  $S$  is the region enclosed by the graph of  $y = \sqrt{\ln x}$ , the line  $x = e$ , and the  $x$ -axis. If the cross sections of  $S$  perpendicular to the  $x$  – axis are semicircles, then the volume of  $S$  is

3. The base of a solid is the region bounded by the lines  $f(x) = 1 - \frac{x}{2}$ ,  $g(x) = -1 + \frac{x}{2}$ , and  $x = 0$ . If the cross sections perpendicular to the  $x$ -axis are equilateral triangles, find the volume of the solid.

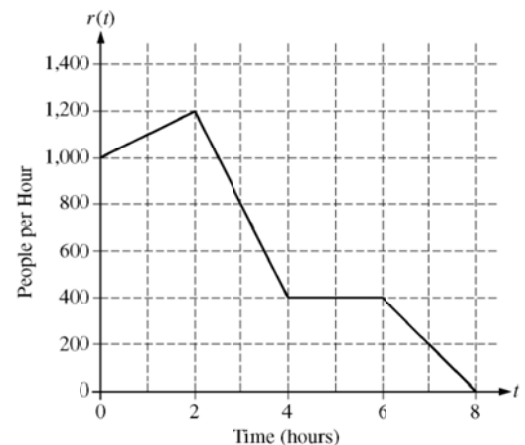
4. [Calculator] Let  $R$  be the region enclosed by the graphs of  $y = \ln(x^2 + 1)$  and  $y = \cos x$ .

a) Find the area of  $R$ .

b) The base of a solid is the region  $R$ . Each cross section of the solid perpendicular to the  $x$ -axis is an equilateral triangle. Write an expression involving one or more integrals that gives the volume of the solid. Do not evaluate.

5. Complete the following questions from your textbook: page 406 #1, 3, 41, and 42

6. There are 700 people in line for a popular amusement-park ride when the ride begins operation in the morning. Once it begins operation, the ride accepts passengers until the park closes 8 hours later. While there is a line, people move onto the ride at a rate of 800 people per hour. The graph above shows the rate,  $r(t)$ , at which people arrive at the ride throughout the day. Time  $t$  is measured in hours from the time the ride begins operation.



a) How many people arrive at the ride between  $t = 0$  and  $t = 3$ ? Show the computations that lead to your answer.

b) Is the number of people waiting in line to get on the ride increasing or decreasing between  $t = 2$  and  $t = 3$ ? Justify your answer.

c) At what time  $t$  is the line for the ride the longest? How many people are in line at that time? Justify your answers.

d) Write, but do not solve, an equation involving an integral expression of  $r$  whose solution gives the earliest time  $t$  at which there is no longer a line for the ride.

AP Calculus  
7.3 Worksheet (Day 2)

All work must be shown in this course for full credit. Unsupported answers may receive NO credit.

1. Suppose region  $R$  is in the first quadrant bounded by the graphs of  $y = \sqrt[3]{x}$  and  $x = 8$ .

a) If  $R$  is rotated about the  $x$ -axis find the resulting volume.

b) Find the volume if  $R$  is rotated around the line  $x = 8$ .

2. The region in the first quadrant bounded by the graph of  $y = \sec x$ ,  $x = \frac{\pi}{4}$ , and the axes is rotated about the  $x$ -axis. What is the volume of the solid generated?

A)  $\frac{\pi^2}{4}$

B)  $\pi - 1$

C)  $\pi$

D)  $2\pi$

E)  $\frac{8\pi}{3}$

3. The volume of the solid obtained by revolving the region enclosed by the ellipse  $x^2 + 9y^2 = 9$  about the  $x$ -axis is

A)  $2\pi$

B)  $4\pi$

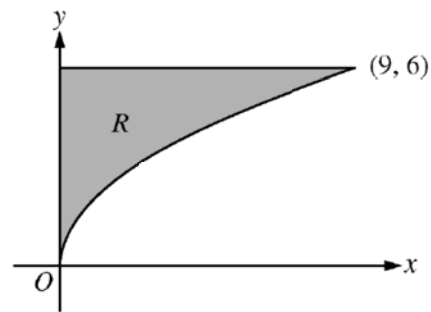
C)  $6\pi$

D)  $9\pi$

E)  $12\pi$



4. Let  $R$  be the region in the first quadrant bounded by the graph of  $y = 2\sqrt{x}$ , the horizontal line  $y = 6$ , and the  $y$ -axis, as shown in the figure above.

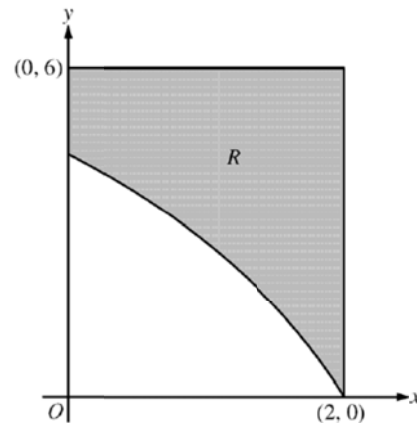


a) Find the area of  $R$ .

b) Write, but do not evaluate, an integral expression that gives the volume of the solid generated when  $R$  is rotated about the horizontal line  $y = 6$ .

c) Region  $R$  is the base of a solid. For each  $y$ , where  $0 \leq y \leq 6$ , the cross section of the solid taken perpendicular to the  $y$ -axis is a rectangle whose height is 3 times the length of its base in region  $R$ . Write, but do not evaluate, an integral expression that gives the volume of the solid.

5. [Calculator] In the figure above,  $R$  is the shaded region in the first quadrant bounded by the graph of  $y = 4\ln(3 - x)$ , the horizontal line  $y = 6$ , and the vertical line  $x = 2$ .



a) Find the area of  $R$ .

b) Find the volume of the solid generated when  $R$  is revolved about the horizontal line  $y = 6$ .

c) The region  $R$  is the base of a solid. For this solid, each cross section perpendicular to the  $x$ -axis is a square. Find the volume of the solid.

6. [Calculator] The rate at which people enter an auditorium for a rock concert is modeled by the function  $R$  given by  $R(t) = 1380t^2 - 675t^3$  for  $0 \leq t \leq 2$  hours;  $R(t)$  is measured in people per hour. No one is in the auditorium at time  $t = 0$ , when the doors open. The doors close and the concert begins at time  $t = 2$ .

a) How many people are in the auditorium when the concert begins?

b) Find the time when the rate at which people enter the auditorium is a maximum. Justify your answer.

c) The total wait time for all the people in the auditorium is found by adding the time each person waits, starting at the time the person enters the auditorium and ending when the concert begins. The function  $w$  models the total wait time for all the people who enter the auditorium before time  $t$ . The derivative of  $w$  is given by  $w'(t) = (2-t)R(t)$ . Find  $w(2) - w(1)$ , the total wait time for those who enter the auditorium after time  $t = 1$ .

d) On average, how long does a person wait in the auditorium for the concert to begin? Consider all people who enter the auditorium after the doors open, and use the model for total wait time from part c.

AP Calculus  
7.3 Worksheet (day 3)

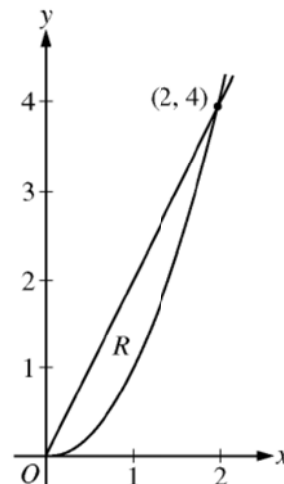
*All work must be shown in this course for full credit. Unsupported answers may receive NO credit.*

1. Let  $R$  be the region between the graphs of  $y = 1$  and  $y = \sin x$  from  $x = 0$  to  $x = \frac{\pi}{2}$ . What is the volume of the solid obtained by revolving  $R$  about the  $x$ -axis?
2. The region enclosed by the graph of  $y = x^2$ , the line  $x = 2$ , and the  $x$ -axis is revolved about the  $y$ -axis. What is the volume of the solid generated?
3. [Calculator] A region in the first quadrant is enclosed by the graphs of  $y = e^{2x}$ ,  $x = 1$ , and the coordinate axes. If the region is rotated about the  $y$ -axis, what is the volume of the solid generated?
4. [Calculator] Let  $R$  be the region in the first quadrant enclosed by the graph of  $y = (x+1)^{\frac{1}{3}}$ , the line  $x = 7$ , the  $x$ -axis, and the  $y$ -axis. What is the volume of the solid generated when  $R$  is revolved about the  $y$ -axis?

5. Let  $R$  be the region in the first quadrant enclosed by the graphs of  $y = 2x$  and  $y = x^2$ , as shown in the figure to the right.

a) Find the area of  $R$ .

b) The region  $R$  is the base of a solid. For this solid, at each  $x$  the cross section perpendicular to the  $x$ -axis has area  $A(x) = \sin\left(\frac{\pi}{2}x\right)$ . Find the volume of the solid.



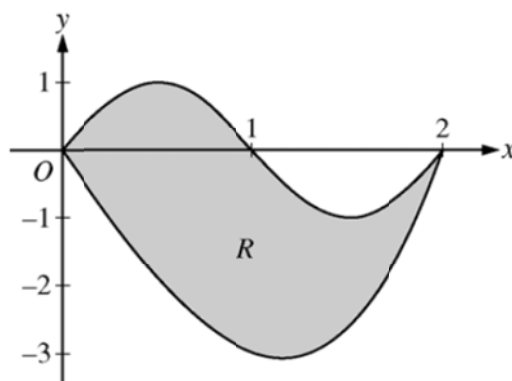
c) Another solid has the same base  $R$ . For this solid, the cross sections perpendicular to the  $y$ -axis are squares. Write, but do not evaluate, an integral expression for the volume of the solid.

d) Write but do not evaluate, the integral which gives the volume of the solid formed by rotating  $R$  around the line  $y = 5$ .

6. [Calculator] Let  $R$  be the region bounded by the graphs of  $y = \sin(\pi x)$  and  $y = x^3 - 4x$ , as shown in the figure above.

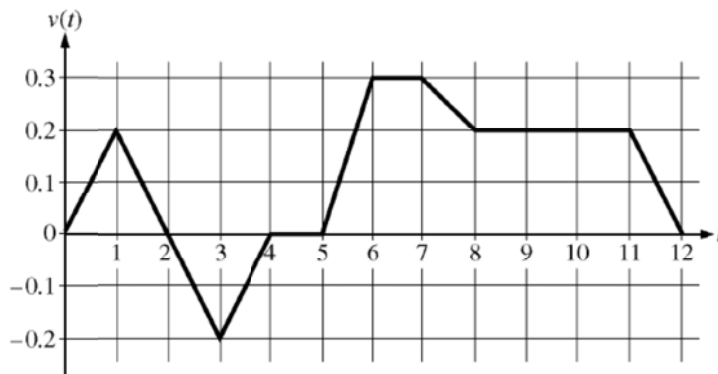
a) Find the area of  $R$ .

b) The horizontal line  $y = -2$  splits the region  $R$  into two parts. Write, but do not evaluate, an integral expression for the area of the part of  $R$  that is below this horizontal line.



c) The region  $R$  models the surface of a small pond. At all points in  $R$  at a distance  $x$  from the  $y$ -axis, the depth of the water is given by  $h(x) = 3 - x$ . Find the volume of water in the pond.

7. [Calculator] Caren rides her bicycle along a straight road from home to school, starting at home at time  $t = 0$  minutes and arriving at school at time  $t = 12$  minutes. During the time interval  $0 \leq t \leq 12$  minutes, her velocity,  $v(t)$ , in miles per minute, is modeled by the piecewise-linear function whose graph is shown at the right.



a) Find the acceleration of Caren's bicycle at time  $t = 7.5$  minutes. Indicate units of measure.

b) Using correct units, explain the meaning of  $\int_0^{12} |v(t)| dt$  in terms of Caren's trip. Find the value of  $\int_0^{12} |v(t)| dt$ .

c) Shortly after leaving home, Caren realizes she left her calculus homework at home, and she returns to get it. At what time does she turn around to go back home? Give a reason for your answer.

d) Larry also rides his bicycle along a straight road from home to school in 12 minutes. His velocity is modeled by the function  $w$  given by  $w(t) = \frac{\pi}{15} \sin\left(\frac{\pi}{12}t\right)$ , where  $w(t)$  is in miles per minute for  $0 \leq t \leq 12$  minutes. Who lives closer to school: Caren or Larry? Show the work that leads to your answer.

AP Calculus  
7.3 Worksheet (day 4)

*All work must be shown in this course for full credit. Unsupported answers may receive NO credit.*

1. Let  $R$  be the region bounded by the graphs of  $y = x^2 + 4$ ,  $y = 8$ , and  $x = 0$ , set up and evaluate the integral that gives the volume of the solid generated by revolving  $R$  about the  $y$ -axis.

a) Use the disc method

b) Use the shell method

**Questions 2 and 3 were done on the last worksheet using 2 rectangles and the washer method. Try doing them again using the shell method.**

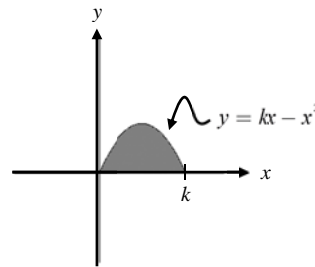
2. [Calculator] A region in the first quadrant is enclosed by the graphs of  $y = e^{2x}$ ,  $x = 1$ , and the coordinate axes. If the region is rotated about the  $y$ -axis, what is the volume of the solid generated?

3. [Calculator] Let  $R$  be the region in the first quadrant enclosed by the graph of  $y = (x+1)^{\frac{1}{3}}$ , the line  $x = 7$ , the  $x$ -axis, and the  $y$ -axis. What is the volume of the solid generated when  $R$  is revolved about the  $y$ -axis?

4. Find the volume of the solid formed by revolving the region bounded by the graphs of  $y = x$  and  $y = 4x - x^2$  about the  $y$ -axis.

5. The shaded region  $R$ , shown in the figure below, is rotated about the  $y$ -axis to form a solid whose volume is 10 cubic inches. Of the following, which best approximates  $k$ ?

- A) 1.51
- B) 2.09
- C) 2.49
- D) 4.18
- E) 4.77



6. Set up an integral and use your calculator to find the volume of the solid generated by revolving the region bounded by  $y = \sqrt{x}$  and the lines  $y = 2$  and  $x = 0$  about ... (if possible, set up the problem two different ways).

- a) ... the  $x$ -axis.
- b) ... the  $y$ -axis.
- c) ... the line  $y = 2$
- d) ... the line  $x = 4$ .

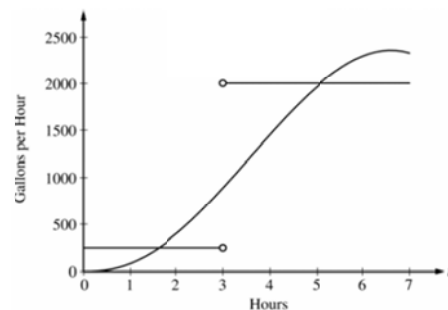
7. [Calculator] The amount of water in a storage tank, in gallons, is modeled by a continuous function on the time interval  $0 \leq t \leq 7$ , where  $t$  is measured in hours. In this model, rates are given as follows:

i) The rate at which water enters the tank is

$$f(t) = 100t^2 \sin(\sqrt{t}) \text{ gallons per hour for } 0 \leq t \leq 7.$$

ii) The rate at which water leaves the tank is

$$g(t) = \begin{cases} 250 & \text{for } 0 \leq t < 3 \\ 2000 & \text{for } 3 < t \leq 7 \end{cases} \text{ gallons per hour.}$$



The graphs of  $f$  and  $g$ , which intersect at  $t = 1.617$  and  $t = 5.076$ , are shown in the figure to the right. At time  $t = 0$ , the amount of water in the tank is 5000 gallons.

a) How many gallons of water enter the tank during the time interval  $0 \leq t \leq 7$ ? Round your answer to the nearest gallon.

b) For  $0 \leq t \leq 7$ , find the time intervals during which the amount of water in the tank is decreasing. Give a reason for your answer.

c) For  $0 \leq t \leq 7$ , at what time  $t$  is the amount of water in the tank the greatest? To the nearest gallon, compute the amount of water at this time. Justify your answer.



8. [Calculator] Let  $R$  be the region in the first and second quadrants bounded above by the graph of  $y = \frac{20}{1+x^2}$  and below by the horizontal line  $y = 2$ .

a) Find the area of  $R$ .

b) Find the volume of the solid generated when  $R$  is rotated about the  $x$ -axis.

c) The region  $R$  is the base of a solid. For this solid, the cross sections perpendicular to the  $x$ -axis are semicircles. Find the volume of this solid.